

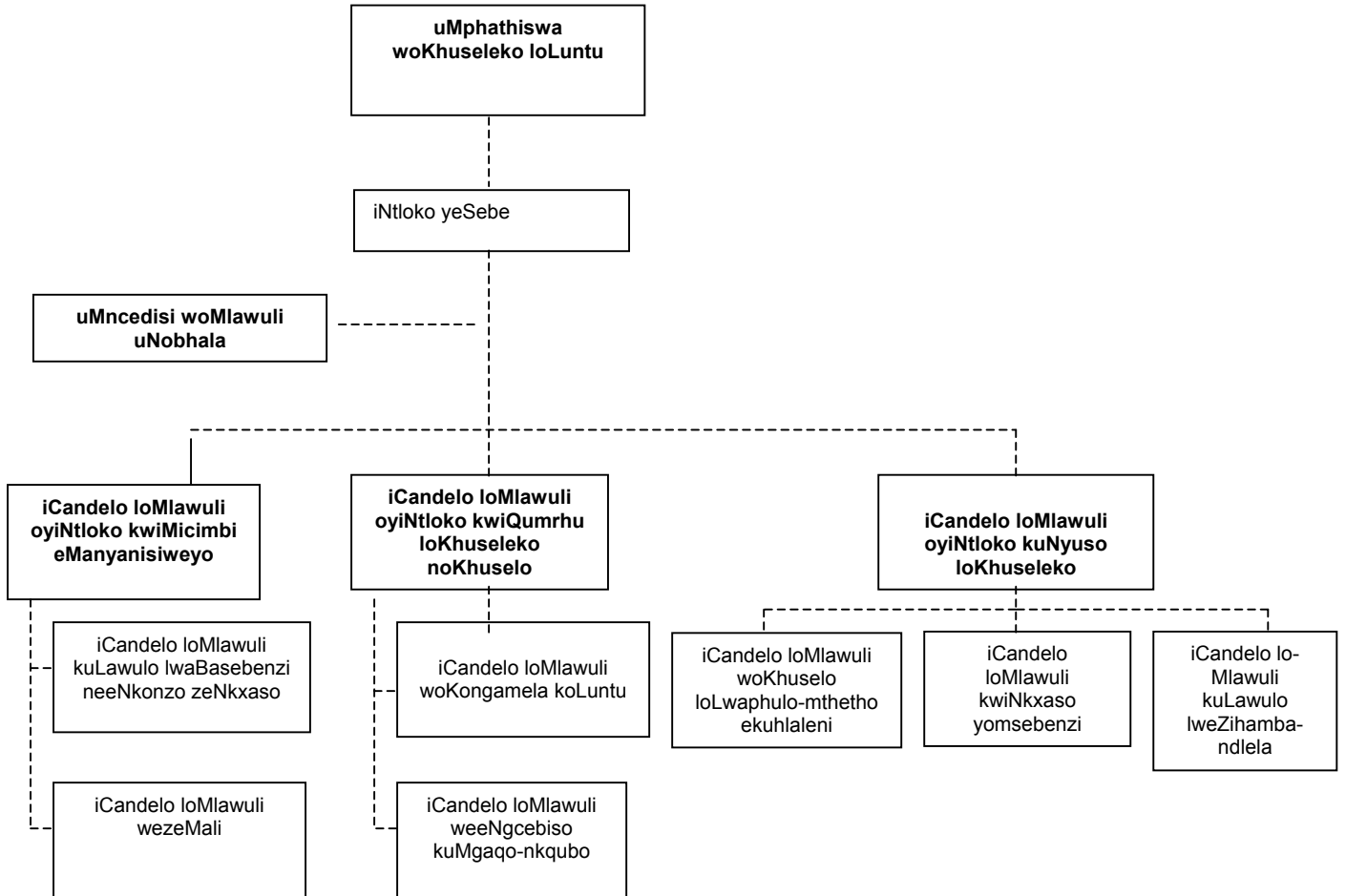
**ISEBE LOKHUSELEKO LOLUNTU**  
**ULAWULO LWEPHONDO LENTSHONA KOLONI**

**ISIQULATHO**

- 1. ULwakhiwo lweSebe**
- 2. Imisebenzi yeSebe**
- 3. linkcukacha zoqhagamshelwano negosa elilisekela lolwazi**
- 4. Isikhokhelo seKhomishoni yamaLungelo oLuntu eMzantsi Afrika**
- 5. lingxelo**
  - 5.1 Inkcazelo yezinto ezigcinwe liSebe**
  - 5.2 lingxelo ezivele zifumaneka**
  - 5.3 Indlela yokucela**
- 6. linkonzo ezifumaneka kuluntu jikelele**
- 7. Amalungiselelo avumela ukuthatha inxaxheba kwisiseko semigaqo-nkqubo kwakunye nokwenziwa kwemisebenzi**
- 8. Izilungiso ezikhoyo ngokunxulumene nemithetho okanye ukungaphumeleli komthetho**

# 1. ULWAKHIWO LWESEBE

## ICANDELO 14(1)(a)



1 uMlawuli oyiNtloko  
2 Abalawuli  
3 AmaSekela-Mlawuli

1 uMlawuli oyiNtloko  
2 Abalawuli  
6 AmaSekela-Mlawuli

1 uMlawuli oyiNtloko  
3 Abalawuli  
8 AmaSekela-Mlawuli

## **2. IMISEBENZI YESEBE**

- Ukwenziwa kophando kunye nohlahlelo lwentshukumo yolwaphulo-mthetho kwakunye nophuhliso lweqhinga lobuchule elifanelekileyo
- Ukunyuswa komgangatho wokongamela koluntu kwiiNkonzo zamaPolisa oMzantsi Afrika (SAPS)
- Ukumisa kunye nokulungelelanisa amanyathelo okuqala kukhuselo lolwaphulo-mthetho
- Ukuqaliswa kunye nokuxhaswa kweeprojekthi zokhuselo lolwaphulo-mthetho ekuhlaleni
- Unikezelo lweenkonzo zolawulo lwezihamba-ndlela kwakunye nokuxhasa imfundiso yokhuseleko ezindleleni.

### **ICANDELO LOMLAWULI OYINTLOKO KWIMICIMBI EMANYANISIWEYO**

- Ukulawula iinkqubo zabasebenzi ngendlela esebenzayo kunye nonikezelo lweenkonzo zenkxaso.

### **ICANDELO LOMLAWULI WEZABASEBENZI NOLAWULO JIKELELE**

- Ulawulo lwenkonzo yezabasebenzi
- Unikezelo lweenkonzo zenkxaso.

### **ICANDELO LOMLAWULI WEZEMALI**

- Unikezelo lolawulo lohlahlo lwabiwo-mali
- Unikezelo lwenkonzo yophicotho-zincwadi zemali kwisebe

### **ICANDELO LOMLAWULI OYINTLOKO KWICANDELO LONOBHALA WOKHUSELEKO NOKHUSELO**

- Uphuhliso lwezicwangciso zeqhinga lobuchule bokhuseleko eNtshona Koloni ngendlela yokwenziwa kophando lobunzululwazi
- Ukunyusa umgangatho weembono zoluntu kwimiba yomgaqo-nkqubo.

### **ICANDELO LOMLAWULI WOKONGAMELA KOLUNTU**

- Ukumiswa kweemfuno zomgaqo-nkqubo kunye nezinto ezihamba phambili eNtshona Koloni ngokuthatha inxaxheba koluntu jikelele
- Ukongamela ukuzalisekiswa komgaqo-nkqubo kunye nonikezelo lweenkonzo ze-SAPS
- Ukunyusa umgangatho wonxibelelwano phakathi kwe-SAPS kunye noluntu jikelele kwimiba yokusonjululwa kweempikiswano ezikhoyo.

### **ICANDELO LOMLAWULI WEENGCEBISO KUMGAQO-NKQUBO**

- Ukwenziwa kophando nokumiswa kolwazi olumalunga nokhuseleko loluntu
- Uphuhliso lwezicwangciso zeqhinga lobuchule kukhuselo eNtshona Koloni
- Unikezelo lwemfundiso ngokhuseleko lwezihamba-ndlela.

### **ICANDELO LOMLAWULI OYINTLOKO KWINKUTHAZO YEZOKHUSELEKO**

- Ukuxhasa amanyathelo okuqala kumsebenzi wokhuselo lolwaphulo-mthetho
- Ukuqalisa, ukwenziwa kunye nolungelelaniso lweprojekthi zokhuseleko ezisekelwe eluntwini kwimimandla
- Unikezelo logunyaziso lomthetho wezihamba-ndlela kunye nenkonzo yolawulo lokhuseleko lwezihamba-ndlela.

## **ICANDELO LOMLAWULO OSINGATHE IINKQUBO ZOKUNQANDA ULWAPHULO-MTHETHO EKUHLALENI**

- Ulawulo lweeprojekthi zokhuselo lolwaphulo-mthetho
- Ulawulo lweeprojekthi ukuze kwakhiwe izikhundla ngaphakathi kwimimandla
- Ulawulo lokungena kweeprojekthi ezizodwa
- Ulungelelaniso lweeprojekthi ezinqamlezileyo.

## **ICANDELO LOMLAWULI WENKXASO ESEBENZAYO**

- Ukuxhasa iiprojekthi ngokunxulumene nogunyaziso lomthetho
- Unikezelo lwenkonzo yoqeqesho lwamapolisa kamasipala.

## **ICANDELO LOMLAWULI KULAWULO LWEZOTHUTHO**

- Ungunyaziso lowiso-mthetho wezothutho
- Unikezelo loqeqesho lwezothutho.

### **3. IINKCUKACHA ZOQHAGAMSHELWANO ZEGOSA LENGCACISO ELILISEKELA**

#### **ICANDELO 14(1)(b)**

Mnu. M.C. Joshua

15 Wale Street/P.O. Box 5346

CAPE TOWN

Tel.: (021) 483-4233

Fax: (021) 483-3479

E-mail: [Mjoshua@pawc.wcape.gov.za](mailto:Mjoshua@pawc.wcape.gov.za)

#### **4. ISIKHOKELO SENDLELA YOKUSEBENZISA UMTHETHO ICANDELO 14(1)(c) SEKOMISHONI YAMALUNGELO OLUNTU LOMZANTSI AFRIKA**

Isikhokelo sendlela yokusebenzisa umthetho oyiPromotion of Access to Information Act, 2000, siya kufumaneka kwiKomishoni yaMalungelo oLuntu loMzantsi Afrika ingedlulanga inyanga kaAgasti 2003. imibuzo ingabhekiswa kwi:

South African Human Rights Commission  
PAIA Unit  
The Research and Documentation Department

Idilesi yePosi: Private Bag 2700  
Houghton  
2041

Ifowuni: 011 – 484 8300

Ifaksi: 011 – 484 1360

IWebsite: [www.sahra.org.za](http://www.sahra.org.za)

E-meyile: [PAIA@sahra.org.za](mailto:PAIA@sahra.org.za)

#### **5.1 INKCAZELO MALUNGA NEZINTO EZIGCINWE LISEBE**

- Uwiso-mthetho
- Ulawulo neMpatho
- Ulawulo lwezeMali
- Ulawulo lwezaBasebenzi
- Iindawo zokuhlala, uGqithiso, iiNkonzo
- Izithuthi kunye noTyelelo olusebuRhulumenteni
- UQhagamshelwano neMicimbi yaMajelo eeNdaba
- iNkonzo yamaPolisa oMzantsi Afrika
- Umanyano noLuntu lukarhulumente kwimimandla yoMzantsi Afrika
- Umanyano namaZiko ezizwe zangaPhandle

- Ukwenziwa kweeProjekthi
- Umanyano namaZiko kaRhulumente
- IPalamente/iKhabhinethi/Abathathi-nxaxheba kwezoPolitiko
- AmaPolisa kaMasipala

## 5.2 IINGXELO EZIVELE ZIFUMANEKE

<b>INKCAZELO ZEENGXELO ZIFUMANEKE KWECANDELO LOMTHETHO NGOKUBA YI-PROMOTION OF ACCESS TO INFORMATION ACT, 2000</b>	<b>NGEENDIDI EZIVELE PHANTSI 15(1) OBIZWA</b>	<b>INDLELA YOKUFIKELELA KWEZI NGXELO</b>
<b>INKCAZELO NGEENDIDI ZEENGXELO EZIVELE ZIFUMANEKE EKUKOPENI NASEKUTHENGENI PHANTSI KWECANDELO 15(1)(a)(iii)</b>		
(a) INgxelo yoNyaka		likopi zezi ngxelo ziyafumaneka ngaphandle kwentlawulo kwiSebe loKhuseleko loLuntu, PO Box 5346, Room M-60, 15 Wale Street, Cape Town.
(b) IziCwangciso zeQhinga loBuchule		Ziyafana noku kuchazwe ngasentla

## 5.3 INDLELA YOKUCELA

- Umntu owenza isicelo kufuneka asebenzise iFomu A neyenzelwe ukusetyenziswa kwimimiselo epapashwe

ngokwemiqathango yomthetho oyiAccess to Information Act (Government Notice R233 of March 2001).

- Umrhumo wesicelo ngama-R35,00 kwaye ahlawulwa ngaphambi kokuba kusetyenzwe ngeziselo.
- Kukho imimiselo eyenziweyo kule fomu ikhankanywe ngasentla ukuze lowo wenza isicelo abonise ukuba ingaba uyayifuna na ikopi yengxelo okanye ufuna ukuyijonga nje.
- Le fomu ikwachazela ocelayo ukuba abonise ukuba luluphi na ulwimi afuna ingxelo le ikhutshwe ngayo, nakuba kungekho zimbophelelo kweli sebe zokuba iguqulwe.
- Ocelayo angabonisa kwakhona ukuba ufuna ibe kweyiphi na imo ingxelo leyo ( ok.kkt. ibe sephepheni, ibe sekhompyutheni, njl,njl). Kuya kuqhutywa ngale ndlela ngaphandle kokuba ukwenza oku kuye kwaphazamisana neSebe eli ekuqhubeni imisebenzi yalo okanye ngezizathu ezithile akuyi kubakho mvume yokufikelela kule ngxelo iya kukhutshwa kwifomu.
- Umrhumo wesicelo kufuneka umntu ocelayo umzekelo xa efuna ikopi zengxelo ecelwayo. Kwezinye iimeko, umntu ocelayo kufuneka akhuphe idiphozithi. Lowo ucelayo angafaka isibheno sangaphakathi malunga nokuhlawula le mirhumo. Umrhumo ohlawulwa ngokuphathelele kwisibheno sangaphakathi yiR50,00. Xa ngaba umntu ocelayo efake isibheno sangaphakathi, kufuneka kuzaliswe uFomu C (ekhutshwa kwiSaziso soRhulumente esinguR233 somhla we 9 kuMatshi 2001).
- Xa kuthe inkqubo elandelwayo yokubhena yangaphakathi yarhoxiswa waza umntu ocelayo wabe akakoneliseki ziziphumo,

kungadityanwa nenkundla ukuze ibe yiyo ekhupha umyalelo ofanelekileyo.

- Ukufikelela kwezi ngxelo kuya kuqhutywa de imirhumo efunekayo ibe ihlawulwe.
- Ingcaciso ingacelwa egameni lomnye umntu, kodwa eyona nto ifunelwa yona ingcaciso leyo kufuneka ixelwe.
- Ukuba umntu ocelayo akakwazi, ukufunda okanye ukubhala, okanye akakwazi ukuzalisa ifomu ngenxa yokukhubazeka, isicelo eso singenziwa nangomlomo. Igosa lengcaciso, okanye umntu ungummeli, kufuneka ibe nguye ozalisa ifomu.

**6. IINKONZO EZIFUMANEKA KULUNTU JIKELELE  
ICANDELO 14(1)(f)**

- Uphando malunga nezikhalazo ezichasene ne-SAPS
- Ukuxhasa ngezimali iiprojekthi
- Uqeqesho lwabantu abagada ebumelwaneni
- Unikezelo lwamagumbi okwenzakala
- Uqeqesho lwamapolisa kamasipala
- Uqeqesho lwamagosa ezihamba-ndlela
- Umiso lwezihamba-ndlela kwiziganeko ezizodwa
- Imisebenzi yokukhapha enxulumene nokuhamba kwemithwalo engaqhelekanga.

**7. AMALUNGISELELO AVUMELA UKUTHATHA INXAXHEBA  
KWISISEKO SEMIGAQO-NKQUBO KWAKUNYE NOKWENZIWA  
KWEMISEBENZI  
ICANDELO 14(1)(g)**

lintlanganiso zovakaliso-zimvo ziya kuqhutywa qho ngonyaka ukukhangela ezona zinto zophathelelene nokwenziwa kweenkqubo

ngokokubaluleka kwzo ndawonye nemiba ephambili. Uluntu luyabandakanyeka nalo kule nkqubo kwaye oku kukunika ithuba lokuphemelela ukusungulwa komgaqo-nkqubo.

NgoJuni 2002, eli sebe laye laqhuba inkqubo ekuthiwa yi-indaba apho lwalubandakanyeka noluntu. Le indaba iye yagqibela ngokuba kusetyenziswe abantu abanolwazi nobuchule, ukubeka iliso elwuntwini ngendlela eya kusombulula iingxaki ndawonye nokugwadla iqhinga lokukhusela uluntu.

**8. IZILUNGISO EZIKHOYO NGOKUNXULUMENE NEMITHETHO  
OKANYE UKUNGAPHUMELELI KOMTHETHO  
ICANDELO 14(1)(h)**

Uwiso-mthetho olusebenzayo kwiSebe lunganikeza uhlaziyo lwangaphakathi okanye inkqubo yesibheni. Xa inokuthi le nkqubo ipheliswe, okanye kungabikho malungiselelo awenziweyo kwinkqubo enjalo, kungaqhagamshelwana nenkundla ukuze kufumanekwe umyalelo ofanelekileyo.