

ISEBE LEZEMALI

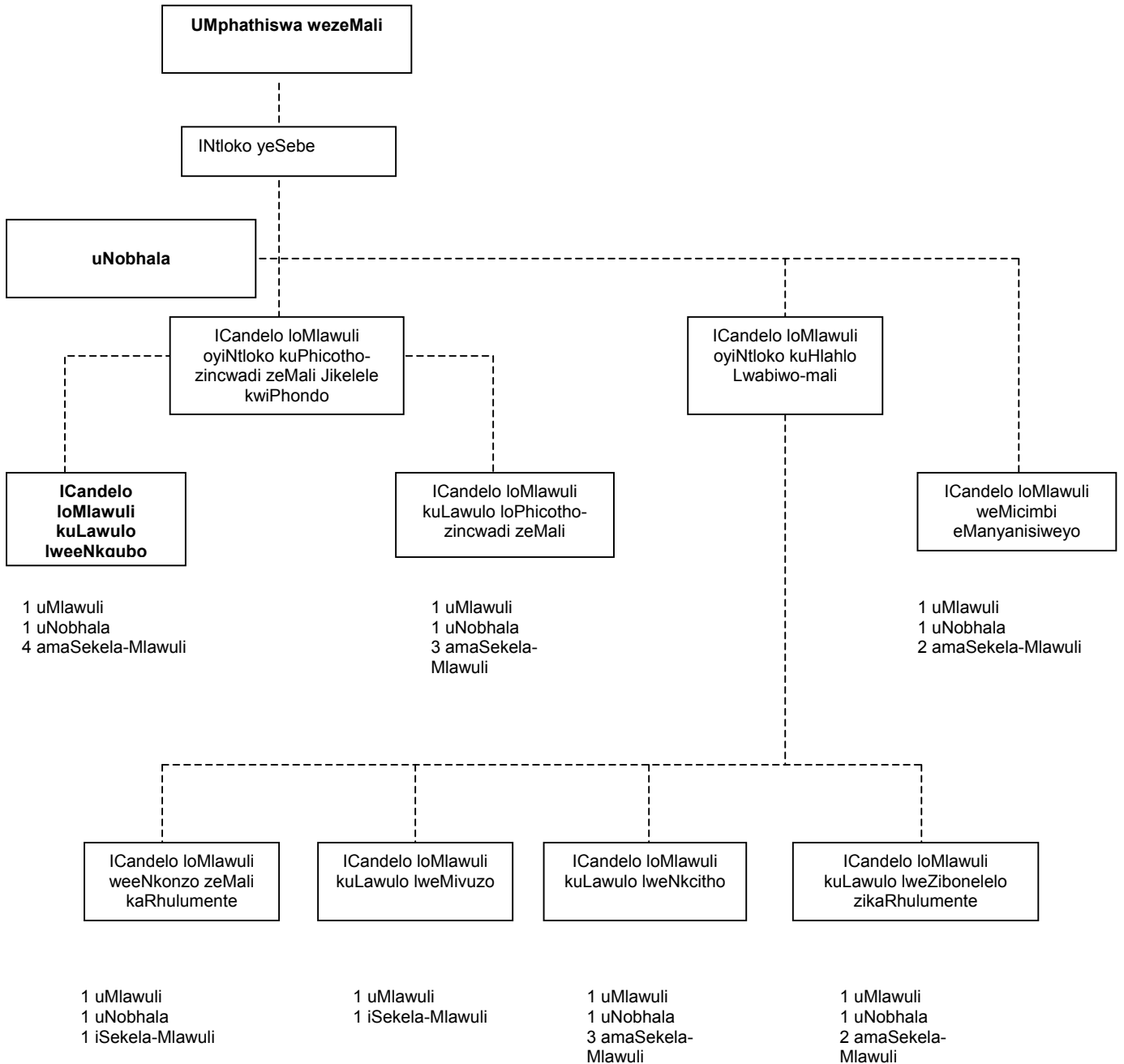
ULAWULO LWEPHONDO LENTSHONA KOLONI

ISIQULATHO

- 1. ULwakhiwo lweSebe**
- 2. Imisebenzi yeSebe**
- 3. linkcukacha zoqhagamshelwano negosa elilisekela lolwazi**
- 4. Isikhokhelo seKhomishoni yamaLungelo oLuntu eMzantsi Afrika**
- 5. lingxelo**
 - 5.1 Inkcazelo yezinto ezigcinwe liSebe**
 - 5.2 lingxelo ezivele zifumaneke**
 - 5.3 Indlela yokucela**
- 6. linkonzo ezifumaneka kuluntu jikelele**
- 7. Amalungiselelo avumela ukuthatha inxaxheba kwisiseko semigaqo-nkqubo kwakunye nokwenziwa kwemisebenzi**
- 8. Izilungiso ezikhoyo ngokunxulumene nemithetho okanye ukungaphumeleli komthetho**

1. ULWAKHIWO LWESEBE

ICANDELO 14(1)(a)



2. IMISEBENZI YESEBE

- Uphuhliso lomgaqo-nkqubo wemali karhulumente (fiscal policy), ukudalwa kwemivuzo kwakunye nokunyusa umgangatho wohlahlo lwabiwo-mali lweminyaka emininzi ngokuchasene nemvelaphi yomgaqo-nkqubo omkhulu wezoqoqosho
- Ucwangciso kunye nolawulo lwenkcitho ngendlela ekhoyo yangaphakathi
- Ukunyusa umgangatho kunye nempatho yolawulo lwesebe likarhulumente lemali, iinkonzo zomsebenzi, uqeqesho kwiinkonzo zemali kunye neenkqubo
- Ukwenziwa kolawulo lwezemali nokuquka ukwenziwa kohlobo kwezemali kunye nophando lobuqhetseba
- Unikezelo lwenkonzo yolwazi olufanelekileyo lezobuchwepheshe kwiPhondo
- Ulawulo lwenkqubo yoqikelelo lwamaxabiso (ithenda) kwiPhondo
- Unikezelo lwenkonzo yenkxaso kulawulo lwangaphakathi kwiSebe.

ICANDELO LOMLAWULI OYINTLOKO KUPHICOTHO-ZINCWADI ZEMALI JIKELELE KWIPHONDO

- Ukuqinisekisa ngokusetyenziswa, ukuzalisekiswa kunye nokugcinwa kweenkqubo ezisebenzayo zemali
- Ulawulo lweNgxowa-mali yeMivuzo kwiPhondo.

ICANDELO LOMLAWULI KULAWULO LWEENKQUBO

- Uphuhliso kunye nolawulo olufanelekileyo lweenkqubo kulawulo lwemali
- Ukwandiswa kwesikhundla sezemali ngendlela yoqeqesho olusebenzayo
- Uphuhliso kunye nozalisekiso lwezemali kunye nemigangatho yophicotho-zincwadi zemali esisithethe.

ICANDELO LOMLAWULI KULAWULO LOPHICOTHO-ZINCWADI ZEMALI

- Impatho kulawulo lwemali eyikheshi
- Ulawulo lwemali-mboleko
- Ukunyusa umgangatho kunye nolawulo lophicotho-zincwadi zemali
- Ukwenziwa kweenkonzo zophicotho-zincwadi zemali lisebe kwamanye amasetyana asakhulayo.

ICANDELO LOMLAWULI OYINTLOKO KUHLAHLA LWABIWO-MALI

- Ukumiswa kwenkqubo-sikhokhelo kumgaqo-nkqubo wemali karhulumente kuRhulumente wePhondo
- Ukunyusa umgangatho wolawulo lwemivuzo kwiphondo
- Ulawulo lwempatho kwinkcitho yephondo kunye nohlahlo lwabiwo-mali kwiziphatha-mandla zengingqi
- Ukumiswa kwemali kunye nolawulo lwezibonelelo zikarhulumente.

ICANDELO LOMLAWULI WEENKONZO ZEMALI KARHULUMENTE

- Ukusekwa komgaqo-nkqubo wemali karhulumente kwiphondo
- Ucwangciso lwenkqubo yohlahlo lwabiwo-mali kwiphondo i-MTEF
- Ukumiswa kolwabiwo lwe-MTEF kwiphondo
- Umanyaniso kunye nokondlalwa kohlahlo lwabiwo-mali olukhulu.

ICANDELO LOMLAWULI KULAWULO LWEMIVUZO

- Ukusekwa komgaqo-nkqubo wemivuzo kwiphondo
- Uphuhliso kunye nokwandiswa kwabo bonke oovimba abanokuthi babekhona ekudaleni umvuzo kumntu ngamnye

- Impatho kulawulo kunye nogqithiso lwengxelo enxulumene nobunjani bemivuzo
- Uvavanyo, ukongamela, uhlahlelo, iingcebiso kunye nonikezelo lolwazi olunxulumene neerhafu, iilevi, amalungelo, iintlawulo ezongeziweyo, imali yomsebenzisi kunye nemiba enxulumene noku
- Ulawulo longcakazo kunye nemiba yemidyarho.

ICANDELO LOMLAWULI KULAWULO LWENKCITHO

- Ulawulo lwempatho kwinkcitho yephondo
- Ukongamela uhlahlo lwabiwo-mali lweziphatha-mandla zeengingqi.

ICANDELO LOMLAWULI WEMIMISELO

- Ukuzalisekiswa kwemigangatho yommiselo wezemali
- Ukuzalisekiswa kwemigangatho yezibonelelo zikarhulumente
- Unikezelo lwenkxaso kulawulo kunye neenkonzelo zeengcebiso kwizibonelelo zikarhulumente kwiBhodi yoQikelelo lwamaxabiso (iBhodi yeThenda).

ICANDELO LOMLAWULI WEMICIMBI EMANYANISIWEYO

- Unikezelo lwenkxaso yezabasebenzi kunye nolawulo kwiSebe
- Impatho yolawulo lwezemali nezibonelelo zikarhulumente.

3. IINKCUKACHA ZOQHAGAMSHELWANO ZEGOSA ELILISEKELA LOLWAZI

ICANDELO 14(1)(b)

Dkt. J.C. Stegmann

7 Wale Street/Private Bag X9165
CAPE TOWN
Inombolo yefowuni: (021) 483-4709
Inombolo yefeksi: (021) 483-3855
E-mail: Jstegma@pawc.wcape.gov.za

**4. ISIKHOKELO SENDLELA YOKUSEBENZISA UMTHETHO
ICANDELO 14(1)(c) SEKOMISHONI YAMALUNGELO OLUNTU
LOMZANTSI AFRIKA**

Isikhokelo sendlela yokusebenzisa umthetho oyiPromotion of Access to Information Act, 2000, siya kufumaneka kwiKomishoni yaMalungelo oLuntu loMzantsi Afrika ingedlulanga inyanga kaAgasti 2003. imibuzo ingabhekiswa kwi:

South African Human Rights Commission
PAIA Unit
The Research and Documentation Department

Idilesi yePosi: Private Bag 2700
Houghton
2041

Ifowuni: 011 – 484 8300
Ifaksi: 011 – 484 1360
IWebsite: www.sahra.org.za
E-meyile: PAIA@sahra.org.za

**5. IINGXELO
ICANDELO 14(1)(d)**

5.1 INKCAZELO YEZINTO EZIGCINWE LISEBE

- Ulawulo nempatho

- lindawo zokuhlala, unikezelo, iinkonzo, ezothutho, utyelelo lwaseburhulumenteni kunye nokuthathwa kohambo
- lingxelo, ukubuyiswa kweengxelo, upapasho kunye nolwazi
- Uwiso-mthetho
- likomiti, iibhodi kunye namabhunga, iiforam kunye nemibutho
- limali zasekhaya
- Abasebenzi
- Ulawulo lohlahlo lwabiwo-mali
- lincwadi zemali
- linkonzo zemali karhulumente
- linkonzo zemali kwisebe
- Ulwazi ngobuchwepheshe
- IBhodi yeThenda kwiPhondo
- Ulawulo lwemivuzo

5.2 IINGXELO EZIVELE ZIFUMANEKE

Akukho saziyo sisemthethweni sike sapapashwa ngokubhekiselele kwizigaba zezi ngxelo kwiSebe ezivele zifunyanwe luluntu ngaphandle kokuba umntu ethe wenza isicelo sokuzifumana ngokwemiqathango yeenkqubo ezilandelwayo ngokomthetho oyiPromotion of Access to Information Act. Nalu uluhlu lweengxelo ezilolo hlobo.

INKCAZELO NGEENDIDI ZEENGXELO EZIVELE ZIFUMANEKE EKUKOPENI NASEKUTHENGENI PHANTSI KWECANDELO 15(1)(a)(ii)

(a) Iisetyhula zohlahlo lwabiwo-mali kunye namaxwebhu olwazi anxulumene noku

(b) Uxwebhu lohlahlo lwabiwo-mali (Ingxelo yohlahlo lwabiwo-mali)

(c) Uxwebhu lomgaqo-nkqubo wemali karhulumente (uMgaqo-nkqubo weMali kaRhulumente eNtshona Koloni)

(d) Ingxelo yohlahlo lwabiwo-mali

(e) Isikhokhelo sabahlali: uHlahlo lwabiwo-mali lwePhondo leNtshona Koloni

(f) Intengiselwano yokuphela kwenyanga nokuphela konyaka

(g) Imiba yomgaqo-nkqubo we-PERSAL enxulumene neerisithi, iintlawulo kunye nemivuzo

(h) Imigangatho yolawulo lwangaphakathi ngokunxulumene neengxelo zohlolo lwezemali

(i) Amaxwebhu omgaqo-nkqubo: imigaqo yezemali, ukuquka phakathi kwezinye izinto, iisetyhula, imimiselo yecandelo lolawulo-zimali kunye nemiyalelo

likopi zezi ngxelo ziyafumaneka xa uthe wahlawula umrhumo ochaziweyo kwiCandelwana leeNkonzo zeMali kaRhulumente, Private Bag X9165, Legislature Building, Wale Street, Cape Town.

likopi zezi ngxelo ziyafumaneka xa uthe wahlawula umrhumo ochaziweyo kwiCandelwana leeNkonzo zoPhicotho-zincwadi zemali, Private Bag X9165, Legislature Building, Wale Street, Cape Town.

<p>yecandelo lolawulo-zimali nogqithiso lwemisebenzi</p> <p>(j) Iingxelo zemali zonyaka</p> <p>(k) Uqeqesho: iisetyhula zesiqingatha sonyaka malunga neenkqubo zoqeqesho kwezemali</p> <p>(l) Inggokelela yamanani oqeqesho – iingxelo zonyaka malunga nenani eliqeqeshiweyo kunye neziphumo</p> <p>(m) Uqeqesho: imizuzu enxulumene noqeqesho kwisiqingatha sonyaka</p> <p>(n) Uqeqesho: iinkqubo zophuhliso lobuchule</p> <p>(o) Izaziso ezishicilelweyo malunga noqeqesho</p> <p>(p) Uqeqesho: Ukwenziwa komgaqo-nkqubo ngokunxulumene nobume kunye nexesha lezi zifundo</p> <p>(q) Ulwabiwo lwabaqikeleli bamaxabiso e-Sourcelink</p> <p>(r) Uhlahlo lwabiwo-mali nolawulo lwenkcitho</p> <p>(s) Isicwangciso sezinto ezizenzekelayo (contingency) kwizakhiwo kunye nabasebenzi</p> <p>(t) Uluhlu lweenombolo zangaphakathi zefowuni (ukuquka neenombolo zeselula)</p> <p>(u) Iisetyhula zecandelo lolawulo-zimali</p> <p>(v) Iisetyhula zolawulo</p> <p>(w) Inkqubo yokugcina iingxelo (ukufayilisha)</p> <p>(x) Izinga lemivuzo</p> <p>(y) Iinkcukacha zokusekwa ngokunxulumene nesiCwangciso soLingano kwezeNgqesho</p> <p>(z) Ukusekwa kweSebe</p>	<p>likopi zezi ngxelo ziyafumaneka xa uthe wahlawula umrhumo ochaziweyo kwiCandelwana loQeqesho, Private Bag X9165, Legislature Building, Wale Street, Cape Town.</p> <p>likopi zezi ngxelo ziyafumaneka xa uthe wahlawula umrhumo ochaziweyo kwiCandelwana leMicimbi eManyanisiweyo, Private Bag X9165, Legislature Building, Wale Street, Cape Town.</p> <p>likopi zezi ngxelo ziyafumaneka xa</p>
--	--

<p>(aa) Ulwakhiwo lwezikhundla zesebe</p> <p>(bb) KST36 (iimeko jikelele kunye neenkqubo ezinxulumene noqikelelo lwamaxabiso okanye ithenda)</p> <p>(cc) KST37 (imigaqo yamasebe ngokunxulumene nolwandiso)</p> <p>(dd) I-Western Cape Provincial Tender Board Law, 1994 (uMthetho 8 ka-1994)</p> <p>(ee) Imimiselo kwi-Western Cape Provincial Tender Board Law, 1994 (uMthetho 8 ka- 1994)</p> <p>(ff) I-National Small Business Act, 1996 (uMthetho 102 ka- 1996)</p> <p>(gg) I-Preferential Procurement Policy Framework Act, 2000 (uMthetho 5 ka-2000)</p> <p>(hh) Iincwadi: Sourcelink</p> <p>(ii) Iincwadi: iNkqubo yoLawulo lweZibonelelo zikaRhulumente ekuJoliswe kuzo ngokweeNdawo ngeeNdawo</p> <p>(jj) Umgaqo-nkqubo kunye neenkqubo zolwabiwo lwezivumelwano zokhuseleko kubaqikeleli bamaxabiso (tenders)</p> <p>(qq) Ingxelo yonyaka yeBhodi yeThenda eNtshona Koloni</p>	<p>uthe wahlawula umrhumo ochaziweyo kwiCandelwana leMimiselo (iCandelo leThenda), Private Bag X9165, Legislature Building, Wale Street, Cape Town.</p>
---	---

5.3 INDLELA YOKUCELA

- Umntu owenza isicelo kufuneka asebenzise iFomu A neyenzelwe ukusetyenziswa kwimimiselo epapashwe

ngokwemiqathango yomthetho oyiAccess to Information Act (Government Notice R233 of March 2001).

- Umrhumo wesicelo ngama-R35,00 kwaye ahlawulwa ngaphambi kokuba kusetyenzwe ngezisicelo.
- Kukho imimiselo eyenziweyo kule fomu ikhankanywe ngasentla ukuze lowo wenza isicelo abonise ukuba ingaba uyayifuna na ikopi yengxelo okanye ufuna ukuyijonga nje.
- Le fomu ikwachazela ocelayo ukuba abonise ukuba luluphi na ulwimi afuna ingxelo le ikhutshwe ngayo, nakuba kungekho zimbophelelo kweli sebe zokuba iguqulwe.
- Ocelayo angabonisa kwakhona ukuba ufuna ibe kweyiphi na imo ingxelo leyo (ok.kkt. ibe sephepheni, ibe sekhompyutheni, njl,njl). Kuya kuqhutywa ngale ndlela ngaphandle kokuba ukwenza oku kuye kwaphazamisana neSebe eli ekuqhubeni imisebenzi yalo okanye ngezizathu ezithile akuyi kubakho mvume yokufikelela kule ngxelo iya kukhutshwa kwifomu.
- Umrhumo wesicelo kufuneka umntu ocelayo umzekelo xa efuna ikopi zengxelo ecelwayo. Kwezinye iimeko, umntu ocelayo kufuneka akhuphe idiphozithi. Lowo ucelayo angafaka isibheni sangaphakathi malunga nokuhlawula le mirhumo. Umrhumo ohlawulwa ngokuphathelele kwisibheni sangaphakathi yiR50,00. Xa ngaba umntu ocelayo efake isibheni sangaphakathi, kufuneka kuzaliswe uFomu C (ekhutshwa kwiSaziso soRhulumente esinguR233 somhla we 9 kuMatshi 2001).
- Xa kuthe inkqubo elandelwayo yokubhena yangaphakathi yarhoxiswa waza umntu ocelayo wabe akakoneliseki ziziphumo,

kungadityanwa nenkundla ukuze ibe yiyo ekhupha umyalelo ofanelekileyo.

- Ukufikelela kwezi ngxelo kuya kuqhutywa de imirhumo efunekayo ibe ihlawulwe.
- Ingcaciso ingacelwa egameni lomnye umntu, kodwa eyona nto ifunelwa yona ingcaciso leyo kufuneka ixelwe.
- Ukuba umntu ocelayo akakwazi, ukufunda okanye ukubhala, okanye akakwazi ukuzalisa ifomu ngenxa yokukhubazeka, isicelo eso singenziwa nangomlomo. Igosa lengcaciso, okanye umntu ungummeli, kufuneka ibe nguye ozalisa ifomu

6. IINKONZO EZIFUMANEKA KULUNTU JIKELELE

ICANDELO 14(1)(f)

Akukho nto

7. AMALUNGISELELO AVUMELA UKUTHATHA INXAXHEBA KWISISEKO SEMIGAQO-NKQUBO KWAKUNYE NOKWENZIWA KWEMISEBENZI

ICANDELO 14(1)(g)

Kwiimeko ezininzi uviso-mthetho luchaza iinkqubo ezilandelwayo zokwenza imicimbi yaziwe.

8. IZILUNGISO EZIKHOYO NGOKUNXULUMENE NEMITHETHO OKANYE UKUNGAPHUMELELI KOMTHETHO

ICANDELO 14(1)(h)

Uviso-mthetho olusebenzayo kwiSebe lunganikeza uhlaziyo lwangaphakathi okanye inkqubo yesibheni. Xa inokuthi le nkqubo ipheliswe, okanye kungabikho malungiselelo awenziweyo kwinkqubo enjalo, kungaqhagamshelwana nenkundla ukuze kufumaneke umyalelo ofanelekileyo.