

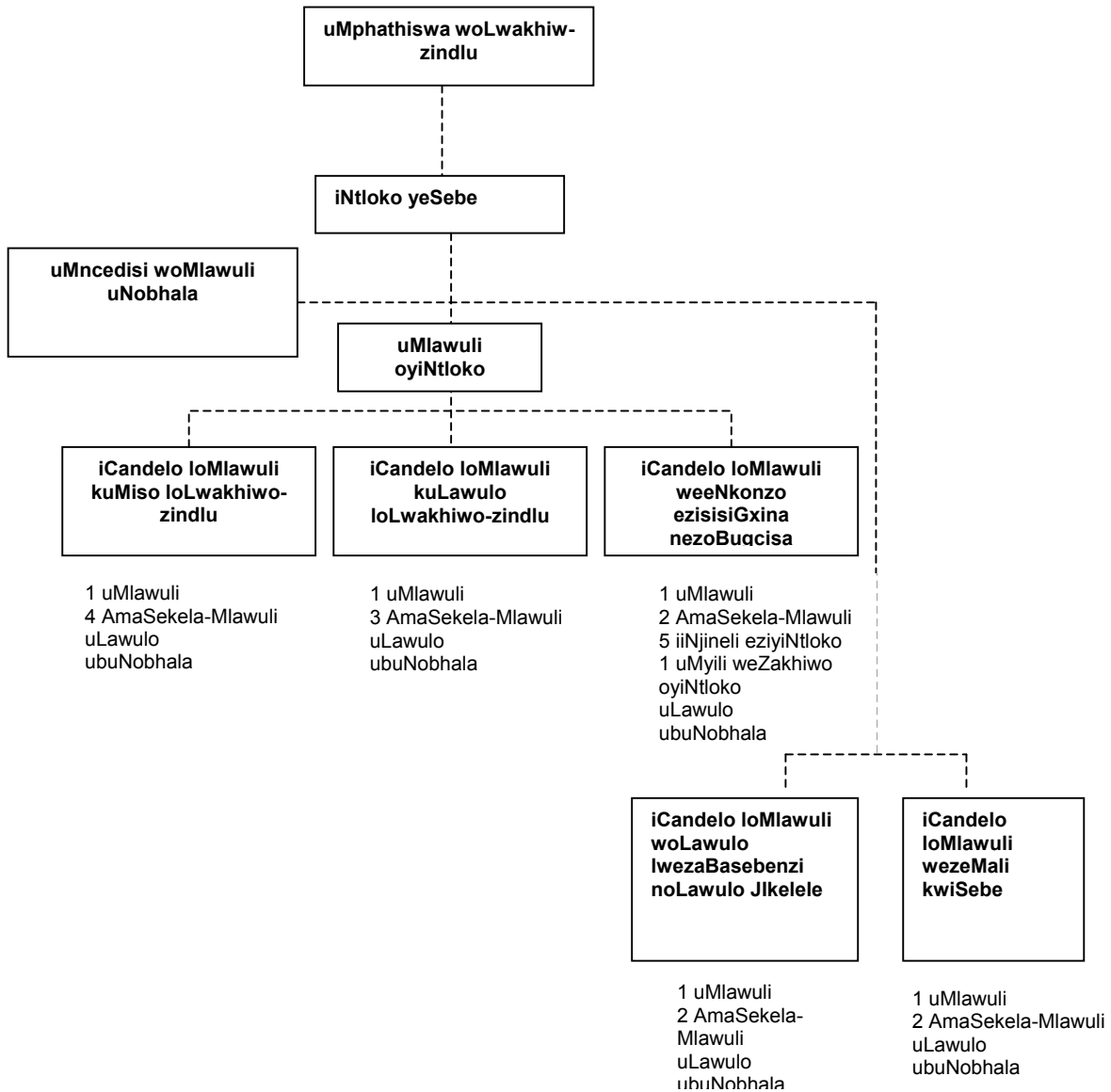
ISEBE LEZEZINDLU

ULAWULO LWEPHONDO LENTSHONA KOLONI

ISIQULATHO

- 1. ULwakhiwo lweSebe**
- 2. Imisebenzi yeSebe**
- 3. linkcukacha zoqhagamshelwano negosa elilisekela lolwazi**
- 4. Isikhokhelo seKhomishoni yamaLungelo oLuntu eMzantsi Afrika**
- 5. lingxelo**
 - 5.1 Inkcazelo yezinto ezigcinwe liSebe**
 - 5.2 lingxelo ezivele zifumaneka**
 - 5.3 Indlela yokucela**
- 6. linkonzo ezifumaneka kuluntu jikelele**
- 7. Amalungiselelo avumela ukuthatha inxaxheba kwisiseko semigaqo-nkqubo kwakunye nokwenziwa kwemisebenzi**
- 8. Izilungiso ezikhoyo ngokunxulumene nemithetho okanye ukungaphumeleli komthetho**

**1. ULWAKHIWO LWESEBE
ICANDELO 14(1)(a)**



2. IMISEBENZI YESEBE

- Unikezelo lweenkonzo zenkxaso ezisisigxina kunye nezobugcisa ngokunxulumene nolwakhiwo-zindlu nemiba yophuhliso lolwakhiwo-zindlu enxulumene noku
- Ulawulo lwamalungiselelo olwakhiwo-zindlu ngokuhambelana neenkqubo zolwakhiwo-zindlu ezamkelweyo
- Ukunyusa umgangatho wolungiso lolwakhiwo-zindlu kunye nemiba enxulumene nabanikazi-zindlu okanye abaqeshileyo.

ICANDELO LOMLAWULI WEENKONZO EZIVUNYIWEYO NEZOBUGCISA

- Unikezelo lwenkonzo yenkxaso kubunjinieli nokuyilwa kolwakhiwo
- Unikezelo lwenkonzo yenkxaso kulwakhiwo
- Unikezelo lwenkonzo yenkxaso kuhlolo lwemisebenzi
- Unikezelo lwenkonzo yenkxaso kulawulo ngokunxulumene neeprojekthi.

ICANDELO LOMLAWULI KULAWULO LOLWAKHIWO-ZINDLU

- Ulawulo lweenkqubo zolwakhiwo-zindlu kuzwelonke nakwiphondo
- Ulawulo kunye noqhagamshelwano malunga nomgaqo-nkqubo wolwakhiwo-zindlu kuzwelonke nakwiphondo
- Ulawulo kwimpatho yemiba yolawulo kulwakhiwo-zindlu
- Ulawulo lophuhliso lolwakhiwo-zindlu.

ICANDELO LOMLAWULI KUMISO LOLWAKHIWO-ZINDLU

- Ukunyusa umgangatho womiso oluhamba ngendlela efanelekileyo
- Ukunyusa umgangatho wophuhliso lolwakhiwo-zindlu

- Ulawulo lwezinto zeBhodi yoPhuhliso loLwakhiwo-zindlu eNtshona Koloni
- Unikezelo lwenkonzo kwimimandla esemaphandleni kunye nakwiifama zoluntu
- Ulawulo lweNkundla yamaTyala kuLwakhiwo-zindlu oluQeshisayo kwiPhondo (Provincial Rental Housing Tribunal).

**3. IINKCUKACHA ZOQHAGAMSHELWANO ZEGOSA ELILISEKELA LENGCACISO
ICANDELO 14(1)(b)**

Mnu. J.W. Africa
27 Wale Street/Private Bag X9083
CAPE TOWN
Inombolo yefowuni: (021) 483-4347
Inombolo yefeksi: (021) 483-3475
E-mail: Jafrica@pawc.wcape.gov.za

**4. ISIKHOKELO SENDLELA YOKUSEBENZISA UMTHETHO
ICANDELO 14(1)(c) SEKOMISHONI YAMALUNGELO OLUNTU LOMZANTSI AFRIKA**

Isikhokelo sendlela yokusebenzisa umthetho oyiPromotion of Access to Information Act, 2000, siya kufumaneka kwiKomishoni yaMalungelo oLuntu loMzantsi Afrika ingedlulanga inyanga kaAgasti 2003. imibuzo ingabhekiswa kwi:

South African Human Rights Commission
PAIA Unit
The Research and Documentation Department

Idilesi yePosi: Private Bag 2700
Houghton
2041

Ifowuni: 011 – 484 8300
Ifaksi: 011 – 484 1360
IWebsite: www.sahra.org.za
E-meyile: PAIA@sahra.org.za

5. IINGXELO ICANDELO 14(1)(d)

5.1 INKCAZELO YEZINTO EZIGCINWE LISEBE

- Uwiso-mthetho kuLwakhiwo-zindlu kwiPhondo
- Ugunyaziso lwezemali kwiSebe
- Iingxelo kwimiba yolwakhiwo-zindlu
- Ukuphuculwa kweendawo zokuhlala kwiindawo ezingekho sikweni ematyotyombeni
- AmaBhunga
- Iikomiti ezinxulumene nolwakhiwo-zindlu kunye neenkomfa
- Izaziso kuluntu jikelele kunye noshishino
- Uphuhliso kunye nenkxaso enxulumene noku
- Iiprojekthi ezizodwa zeBhodi yoPhuhliso loLwakhiwo-zindlu eNtshona Koloni
- Uqikelelo lwamaxabiso (iithenda) kunye nezivumelwano ezinxulumene nolwakhiwo-zindlu
- Ukufumana izibonelelo kunye neenkonzo
- Ukuqesha nokugqitywa kwemihlaba nezakhiwo zeBhodi yoPhuhliso loLwakhiwo-zindlu eNtshona Koloni
- Ukugcinwa kwemihlaba nezakhiwo zeBhodi yoPhuhliso loLwakhiwo-zindlu eNtshona Koloni

- Abemi phantsi komthetho obizwa ngokuba yi-Rural Areas Act, uMthetho 9 ka-1987 (kwiNdlu yaBameli)
- Imihlaba nezakhiwo kunye neziza phantsi komthetho obizwa ngokuba yi-Rural Areas Act, uMthetho 9 ka-1987 (kwiNdlu yaBameli)
- Ucwangciso nophuhliso phantsi komthetho obizwa ngokuba yi-Rural Areas Act, uMthetho 9 ka-1987 (kwiNdlu yaBameli)
- Inkxaso karhulumente kuLwakhiwo-zindlu
- Uphuhliso ngokutsha lweehostele
- Udliwano-ndlebe lweNkundla yamaTyala kuLwakhiwo-zindlu oluQeshisayo
- Abanamatyala kwiBhodi yoPhuhliso loLwakhiwo-zindlu eNtshona Koloni

5.2 IINGXELO EZIVELE ZIFUMANEKE

ICANDELO 14(1)(e)

Akukho saziso sike sapapashwa bgokubhekiselele kwizigaba zezi ngxelo kwiSebe ezivele zifunyanwe luluntu ngaphandle kokuba umntu ethe wenza isicelo sokuzifumana ngokwemiqathango yeenkqubo ezilandelwayo ngokomthetho oyiPromotion of Access to Information Act. Nalu uluhlu lweengxelo ezilolo hlobo.

INKCAZELO NGEENDIDI ZEENGXELO EZIVELE ZIFUMANEKE EKUKOPENI NASEKUTHENGENI PHANTSI KWECANDELO 15(1)(a)(ii)

<p>(a) Ulwabiwo loqikelelo lwamaxabiso (ithenda) eSourcelink</p>	<p>likopi zezi ngxelo ziyafumaneka xa uthe wahlawula umrhumo ochaziweyo kwiCandelo loMlawuli weeNkonzo ezisisiGxina nezoBugcisa, 27 Wale Street, Private Bag X9083, Cape Town, 8000.</p>
<p>(b) Amaxwebhu awamkelweyo omgaqonkqubo wephondo (c) Uwiso-mthetho lolwakhiwo-zindlu kwiPhondo (d) Imizuzu yeencwadi ezithunyelwa kwiindawo ezininzi (circular) yolwakhiwo-zindlu (e) lifomu zezicelo zenkxaso karhulumente kulwakhiwo-zindlu (f) Uluhlu lwezicelo zeeprojekthi ezithe zafunyanwa (g) Uluhlu lweprojekthi zolwakhiwo-zindlu osele luqalisiwe ukwakhiwa (h) Izisombululo zeBhodi yoPhuhliso loLwakhiwo-zindlu eNtshona Koloni (kumaqela achaphazelekayo kuphela) (i) Iinkcukacha ngenzuzo yenkxaso karhulumente kulwakhiwo-zindlu (kumaqela achaphazelekayo kuphela)</p> <hr/>	<p>likopi zezi ngxelo ziyafumaneka xa uthe wahlawula umrhumo ochaziweyo kwiCandelo loMlawuli kuLawulo loLwakhiwo-zindlu, 27 Wale Street, Private Bag X9083, Cape Town, 8000.</p> <hr/> <p>likopi zezi ngxelo ziyafumaneka xa uthe wahlawula umrhumo ochaziweyo kwiGosa loNxibelelwano kwiCandelo, 27 Wale Street, Private Bag X9083, Cape Town, 8000.</p> <hr/>

<p>(j) Ingxelo yohlahlo lwabiwo-mali</p> <hr/> <p>(k) Imimiselo epapashwe phantsi komthetho obizwa ngokuba yi-Rental Housing Act, 1999 (uMthetho 50 ka-1999)</p> <p>(l) Iifayile zamatyala eNkundla yamaTyala kuLwakhiwo-zindlu oluQeshisayo (kumaqela achaphazelekayo kuphela)</p> <p>(m) Okuthe kwafunyanwa yiNkundla yamaTyala kuLwakhiwo-zindlu oluQeshisayo</p> <p>(n) Ii-akhawunti zabantu abanamatyala (kumaqela achaphazelekayo kuphela).</p> <hr/>	<p>likopi zezi ngxelo ziyafumaneka xa uthelawulawula umrhumo ochaziweyo kwiCandelo loMlawuli woMiso loLwakhiwo-zindlu, 27 Wale Street, Private Bag X9083, Cape Town, 8000.</p> <hr/>
<p>(o) Iingxelo zonyaka ze-</p> <ul style="list-style-type: none"> - Sebe loLwakhiwo-zindlu - Bhodi yoPhuhliso loLwakhiwo-zindlu eNtshona Koloni - Nkundla yamaTyala kuLwakhiwo-zindlu oluQeshisayo eNtshona Koloni <p>(p) SiCwangciso seQhinga loBuchule</p> <p>(q) Uhlahlo lwabiwo-mali (kwiGazethi).</p>	<p>likopi zezi ngxelo ziyafumaneka xa uthelawulawula umrhumo ochaziweyo kwiCandelo loMlawuli wezeMali, 27 Wale Street, Private Bag X9083, Cape Town, 8000.</p>

5.3 INDLELA YOKUCELA

- Umntu owenza isicelo kufuneka asebenzise iFomu A neyenzelwe ukusetyenziswa kwimimiselo epapashwe ngokwemiqathango yomthetho oyiAccess to Information Act (Government Notice R233 of March 2001).

- Umrhumo wesicelo ngama-R35,00 kwaye ahlawulwa ngaphambi kokuba kusetyenzwe ngeziselo.
- Kukho imimiselo eyenziweyo kule fomu ikhankanywe ngasentla ukuze lowo wenza isicelo abonise ukuba ingaba uyayifuna na ikopi yengxelo okanye ufuna ukuyijonga nje.
- Le fomu ikwachazela ocelayo ukuba abonise ukuba luluphi na ulwimi afuna ingxelo le ikhutshwe ngayo, nakuba kungekho zimbophelelo kweli sebe zokuba iguqulwe.
- Ocelayo angabonisa kwakhona ukuba ufuna ibe kweyiphi na imo ingxelo leyo (ok.kkt. ibe sephepheni, ibe sekhompyutheni, njl,njl). Kuya kuqhutywa ngale ndlela ngaphandle kokuba ukwenza oku kuye kwaphazamisana neSebe eli ekuqhubeni imisebenzi yalo okanye ngezizathu ezithile akuyi kubakho mvume yokufikelela kule ngxelo iya kukhutshwa kwifomu.
- Umrhumo wesicelo kufuneka umntu ocelayo umzekelo xa efuna ikopi zengxelo ecelwayo. Kwezinye iimeko, umntu ocelayo kufuneka akhuphe idiphozithi. Lowo ucelayo angafaka isibheni sangaphakathi malunga nokuhlawula le mirhumo. Umrhumo ohlawulwa ngokuphathelele kwisibheni sangaphakathi yiR50,00. Xa ngaba umntu ocelayo efake isibheni sangaphakathi, kufuneka kuzaliswe uFomu C (ekhutshwa kwiSaziso soRhulumente esinguR233 somhla we 9 kuMatshi 2001).
- Xa kuthe inkqubo elandelwayo yokubhena yangaphakathi yarhoxiswa waza umntu ocelayo wabe akakoneliseki ziziphumo, kungadityanwa nenkundla ukuze ibe yiyo ekhupha umyalelo ofanelekileyo.
- Ukufikelela kwezi ngxelo kuya kuqhutywa de imirhumo efunekayo ibe ihlawulwe.

- Ingcaciso ingacelwa egameni lomnye umntu, kodwa eyona nto ifunelwa yona ingcaciso leyo kufuneka ixelwe.
- Ukuba umntu ocelayo akakwazi, ukufunda okanye ukubhala, okanye akakwazi ukuzalisa ifomu ngenxa yokukhubazeka, isicelo eso singenziwa nangomlomo. Igosa lengcaciso, okanye umntu ungummeli, kufuneka ibe nguye ozalisa ifomu

**6. IINKONZO EZIFUMANEKA KULUNTU JIKELELE
ICANDELO 14(1)(f)**

- Ukwamkelwa kwenkxaso karhulumente kulwakhiwo-zindlu
- Ukuqeshiswa kwemihlaba nezakhiwo zeBhodi yoPhuhliso loLwakhiwo-zindlu eNtshona Koloni
- Intengiso yemihlaba nezakhiwo zeBhodi yoPhuhliso loLwakhiwo-zindlu eNtshona Koloni
- Unikezelo lweencwadi zezigqibo malunga neminikelo phantsi komthetho obizwa ngokuba yi-Rural Areas Act
- Ukujongana nezahlulo ezingaphantsi phantsi komthetho obizwa ngokuba yi-Rural Areas Act
- Ubhaliso lweelokishi phantsi komthetho obizwa ngokuba yi-Rural Areas Act kunye ne-Less Formal Township Establishment Act (uMthetho 113 ka-1991)
- Ukumiswa ngokutsha kwemida kunye nokuvalwa kwezitalato neendawo zoluntu jikelele phantsi komthetho obizwa ngokuba yi-Rural Areas Act
- Ukulungiswa kweempikiswano eziphakathi kwabanikazi bezindlu kunye nabaqeshi kwiindawo zokuhlala abantu.

**7. AMALUNGISELELO AVUMELA UKUTHATHA INXAXHEBA
KWISISEKO SEMIGAQO-NKQUBO KWAKUNYE NOKWENZIWA
KWEMISEBENZI
ICANDELO 14(1)(g)**

Kumaxesha amaninzi, uwiso-mthetho luchaza iinkqubo zokwenza imiba ethile ukuba yaziwe kwakunye nokuba uluntu jikelele luthathe inxaxheba.

- Ukwaziswa kumajelo eendaba, anjengamaphephandaba engingqi/ kuluntu jikelele.
- Ucweyo kunye namaqela achaphazelekayo
- Ukwazisa okwenziwa ngewebsite yeSebe
- Iincwadana ezifundisayo kunye nezikhokelo (ngamanye amaxesha)

**8. IZILUNGISO EZIKHOYO NGOKUNXULUMENE NEMITHETHO
OKANYE UKUNGAPHUMELELI KOMTHETHO
ICANDELO 14(1)(h)**

- Uwiso-mthetho olusebenzayo kwiSebe lunganikeza uhlaziyo lwangaphakathi okanye inkqubo yesibheni. Xa inokuthi le nkqubo ipheliswe, okanye kungabikho malungiselelo awenziweyo kwinkqubo enjalo, kungaqhagamshelwana nenkundla ukuze kufumaneke umyalelo ofanelekileyo.